

mission



Mission Zero:
our promise to eliminate
any negative impact our company
may have on the environment
by the year 2020.



CARPET CARE MANUAL

Contents

01	PLANNING – CLEANING AND MAINTENANCE	page 3
	Appearance Maintenance	
	Soil prevention and maintenance routines	
	First Aid for carpet	
	a) Water based spillages	
	b) Oil based spillages	
	c) Gum removal	
	Daily removal of spots and spills	
02	PLANNING A MAINTENANCE PROGRAM	page 5
	Daily maintenance	
	Interim maintenance	
	Periodic maintenance	
03	MAINTENANCE METHOD	page 8
	Vacuum equipment	
	Interim and periodic maintenance method	
	a) Dry extraction (low moisture absorbent compound)	
	b) Bonnet cleaning	
	c) Encapsulation/Crystalline shampoo application	
	d) Hot water injection and extraction	
	e) Chemicals	
04	KEY POINTS TO REMEMBER	page 11

Appendices

01	SPOT CLEANING AND SOLUTION GUIDE	page 12
	Daily removal of spots and spills	
02	HEALTHCARE & AGED CARE SPOT CLEANING	page 15
01	MAINTENANCE EQUIPMENT RECOMMENDATIONS	page 17

InterfaceFLOR Carpet Care Manual is approved by the National Upholstery and Carpet Cleaners Association.

For further details contact:

General Enquiries InterfaceFLOR Customer Support 1800 008 101
New Zealand 0800 800 656

For 24/7 Emergency Cleaning & Maintenance helpline 1800 785 277

Recommended Cleaning Machinery Tennant Company 1800 226 843

Recommended Cleaning Chemicals Whiteley Industries 1800 833 566

Introduction

This guide explains how InterfaceFLOR products perform against traffic and soil.

It describes the steps in developing an economical and effective maintenance plan which will enhance the appearance and extend the life of InterfaceFLOR products.

01 PLANNING – CLEANING AND MAINTENANCE

With any InterfaceFLOR product investment, a planned and implemented maintenance program is the key to ensuring maximum life of these products. Waiting until the carpet is overly soiled may affect appearance retention.

Guided by this plan, maintenance can be concentrated in the high traffic areas and any areas that rapidly re-soil, with periodic all-over cleaning to prolong the useful life of InterfaceFLOR products.

Appearance maintenance

There are two key factors that will affect the appearance of InterfaceFLOR products after installation:

- a) Flattening, matting or shading of the carpet fibre.
- b) Soiling, change in colour and general staining of the carpet.

Maintaining the appearance of InterfaceFLOR products requires that:

- a) Products selected are appropriate for their intended area of use.
- b) Regular cleaning is carried out to prevent soiling, which may cause carpet fibres to mat and bind together.

Soil prevention and maintenance routines

Most soil is transferred to the carpet from foot traffic. The use of an effective dirt barrier matting will greatly reduce the rate of soiling. Dirt barrier matting should be installed for the first three metres (minimum) of all external entrances, goods lifts, loading and off-loading docks and adjoining hard areas. For more information contact an InterfaceFLOR Account Manager.

It is very important that the dirt barrier matting is maintained and serviced on a daily basis. Once the dirt barrier matting is full of soil, it ceases to be effective. For further information please refer to AS/NZS 3733: 1995 paragraph 2.24.

All concrete areas adjoining InterfaceFLOR products should be sealed with an appropriate permanent resinous sealer which will prevent particles of sand, gravel or cement being tracked onto the carpet. An epoxy or urethane sealer is recommended.

These sealed areas should be thoroughly cleaned daily, removing any visible soil and stains by mopping with a neutral pH level detergent.

The use of an anti-soiling spray on InterfaceFLOR products is not recommended.

First Aid for carpet

Prompt action using the InterfaceFLOR Carpet Spot Cleaning



DIRT BARRIER TILES SHOULD BE INSTALLED FOR THE FIRST THREE METRES (MINIMUM) OF ALL EXTERNAL ENTRANCES, GOODS LIFTS, LOADING AND OFF-LOADING DOCKS AND ADJOINING HARD AREAS.



NOTE: IN SOME PRODUCTS/COLOURS. IF A REPLACEMENT TILE FROM STOCK IS USED THEN EXPECT TO SEE A DIFFERENCE IN COLOUR FROM OLD TO NEW UNTIL THE CARPET IS WALKED IN.



FOR THE REMOVAL OF OILY STAINS SUCH AS PAINT, GREASE, TAR, ASPHALT, ETC., A SOLVENT BASED SPOTTER SUCH AS FABRISOLV, IS RECOMMENDED.

Kit assists in easy, complete removal of most spots and stains. The following initial procedures should be applied to treat all spillages and stains on your InterfaceFLOR products.

If the spill is liquid, blot up as much of the spill as possible with a clean white cloth. If the spill is semi-solid, scrape with a spoon or spatula and then blot with a damp sponge. Work from the edge of the spot towards the centre. Never rub a wet spill; this will only spread the problem.

If the spill proves difficult to remove remember that the advantage of using InterfaceFLOR Modular Carpet Tile is that the offending tile can be replaced with a tile from your shelf stock.

Water based spillages

After following the above procedure, promptly remove the remaining residue with a small amount of Dry Absorbent Compound and a hand brush. Sprinkle the Compound over the spot and use a hand brush to gently massage the Compound into the stain. Allow the area to dry (15-30 minutes) and then brush the Compound again. If the Compound seems to stick to the carpet, brush again, then vacuum. Repeat the application if necessary. Do not rub the brush aggressively on the spot.

For difficult to remove coffee, tea, juice or soft drink stains use Mr No Marks in the following manner:

1. Pre - Test a small inconspicuous area for possible discolouration prior to use.
2. Pre - Clean the area using a small amount of Mr No Marks and water.
3. Blot dry with an absorbent cloth or paper towel.
4. Repeat the procedure if necessary.

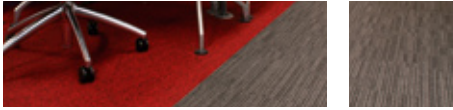
Oil based spillages

For the removal of oily stains such as paint, grease, tar, asphalt, etc., solvent based spotter such as Fabrisolv, is recommended. Caution should always be taken when using any type of penetrating spotter.

First check colourfastness. Test on the carpet in an inconspicuous area by applying the solution on to a white cloth and gently pressing onto the carpet. Check the cloth, if there is any evidence of dye transfer to the cloth, do not continue.

Apply solvent based spotter sparingly to a clean white cloth, then apply the cloth to the spot. Again do not rub, it will only spread the problem. Wipe gently from the outer edge towards the centre of the spot. Repeat procedure until the spot has been removed. Place a clean white towel or absorbent tissue over the treated area until dry. Follow with an application of Dry Absorbent Compound.

Gum removal




To remove chewing gum, use the following steps:

1. Apply Fabrisolv directly to the chewing gum.
2. Leave for several minutes to allow Fabrisolv to soften chewing gum.
3. Remove as much gum as possible using a paint scraper or a knife.
4. Apply a small amount of Fabrisolv to a clean white cloth.
5. Working from outside in, remove any residue of the chewing gum.
6. Rinse well with clean water.

Daily removal of spots and spills

Ensure that the InterfaceFLOR Carpet Spot Cleaning Kit is available at all times to enable quick treatment of all spillages. Any stain or spot not removed by an approved method, is to be noted in a daily log, together with details of the methods used in the attempted removal for future reference. If unattended, these stains become difficult to remove and will attract more soil.

For more information on removal of spots and spills, please see Appendices 1: Spot Cleaning and Solution Guide on page 11 of this manual.



AFTER SPOT CLEANING IT IS RECOMMENDED TO REMOVE ANY RESIDUAL DETERGENT BY RINSING THE AREA WITH CLEAN WATER. THIS WILL HELP PREVENT RAPID RESOILING OF THE CLEANED AREA.

02 PLANNING A MAINTENANCE PROGRAM

Carpet can only perform if it is maintained properly. Failure to do so will adversely affect the life and appearance of InterfaceFLOR products.

A maintenance program is a comprehensive plan which maps out the future maintenance schedules for the product. It provides a system which will maintain the appearance retention for the life of the investment. The maintenance program is developed around the traffic volume and soiling rates of the different areas throughout the installation. (See Diagram 1 and Table 1)

Frequencies need to be established in consultation with the InterfaceFLOR Accredited Maintenance Network. Improper techniques and frequencies can risk voiding the end users warranty.

When developing a maintenance program each facility is different therefore all programs must be customised accordingly. InterfaceFLOR offers a comprehensive maintenance planning service via the Accredited Maintenance Network – please contact your InterfaceFLOR Account Manager or the 24/7 Emergency Cleaning & Maintenance helpline: 1800 785 277 for details.

Daily maintenance



CARPET CAN ONLY PERFORM IF IT IS MAINTAINED PROPERLY. FAILURE TO DO SO WILL ADVERSELY AFFECT THE LIFE AND APPEARANCE OF INTERFACEFLOR PRODUCTS.

Daily maintenance involves day to day vacuuming and carpet spotting utilising the InterfaceFLOR Carpet Spot Cleaning Kit. Heavy traffic areas may require more regular cleaning. Vacuuming should involve recommended equipment, using overlapping passes of the area at a constant speed.

Interim maintenance

Interim maintenance is carried out on a weekly, monthly basis or on demand. It will usually involve an interim cleaning method as required. The maintenance plan will stipulate which areas need to be cleaned. Usually this would be the heavy and medium traffic areas of your installation. The mix of interim and periodic cleaning will vary with each maintenance program.

Periodic maintenance

An integral part of your maintenance program should be a Periodic Clean, which encompasses the entire installation. It is important that on a quarterly, half yearly and/or an annual basis your whole installation is cleaned utilising a Hot Water Injection and Extraction method. This ensures that the appearance of your InterfaceFLOR products are kept uniform. For more information, please call the InterfaceFLOR Customer support on 1800 008 101.

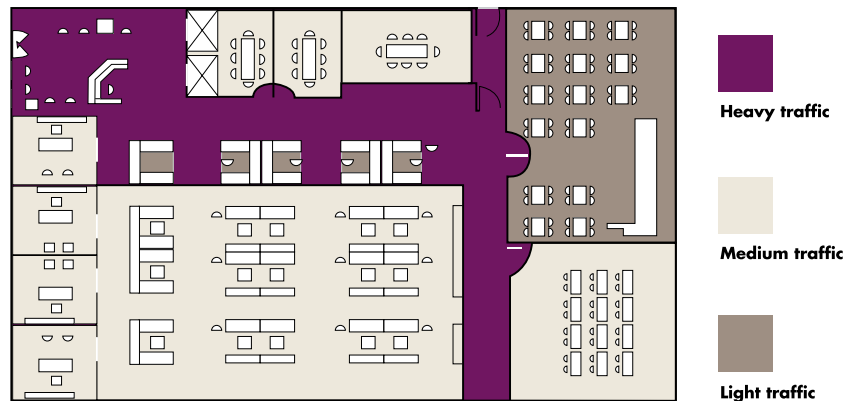
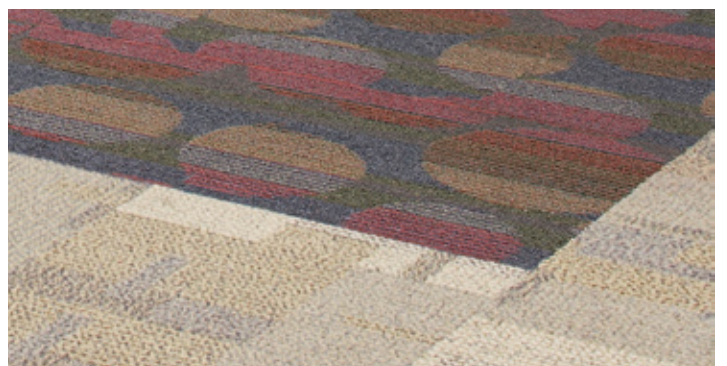
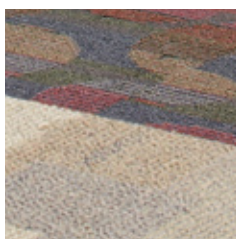
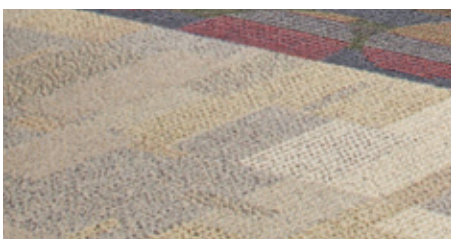


DIAGRAM 1: EXAMPLE OF A GRADED TRAFFIC VOLUME PLAN FOR A MAINTENANCE PROGRAM.



Location	Usual Traffic Volume	Suggested Maintenance Program	Suggested Frequency	Minimum Frequency
Domestic	Light	Full Vacuum	2 times per week	Weekly
		Spot and stain removal	Daily – ASAP	Daily – ASAP
		Interim clean	Every 6 months	Every 18 months
		Periodic corrective or restorative clean	Yearly	Every 2 years
Executive offices	Light	Full vacuum	2 times per week	Weekly
		Spot and stain removal	Daily – ASAP	Daily – ASAP
		Interim clean	Every 9 months	Every 18 months
		Periodic corrective or restorative clean	Every 18 months	Every 36 months
Clerical offices, hospital wards, and hotel bedrooms	Medium	Full Vacuum	3 times per week	2 times per week
		Spot and stain removal	Daily – ASAP	Daily – ASAP
		Interim clean	Every 6 months	Yearly
		Periodic corrective or restorative clean	Yearly	Every 2 years
Corridors and foyers, ground floor shops, hotel lounges, kindergartens and school classrooms	Heavy	Full Vacuum	Daily	3 times per week
		Spot and stain removal	Daily – ASAP	Daily – ASAP
		Interim clean	Every 3 months	Every 6 months
		Periodic corrective or restorative clean	Every 6 months	Yearly
Restaurants, schools, corridors and hospital public areas	Very Heavy	Full Vacuum	Daily	Daily
		Spot and stain removal	Daily – ASAP	Daily – ASAP
		Interim clean	Monthly	Every 2 months
		Periodic corrective or restorative clean	Every 3 months	Every 6 months

TABLE 1: EXAMPLE OF A MAINTENANCE PROGRAM CLEANING SCHEDULE

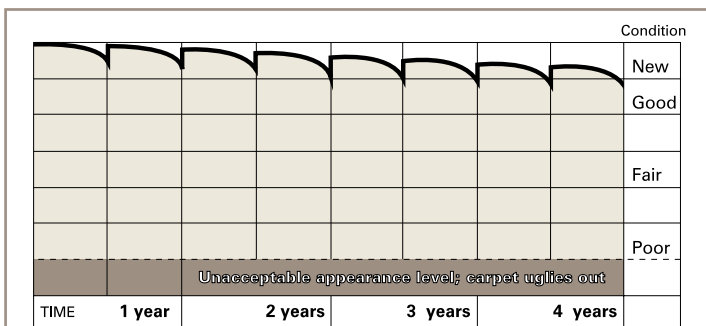


DIAGRAM 3: CARPET APPEARANCE LEVEL UTILISING AN UNPLANNED MAINTENANCE PROGRAM.

Carpet appearance level: Planned program

Planned maintenance program:

- Traffic areas and spots receive the most attention.
- Appearance will be good every day. Carpet life is extended.

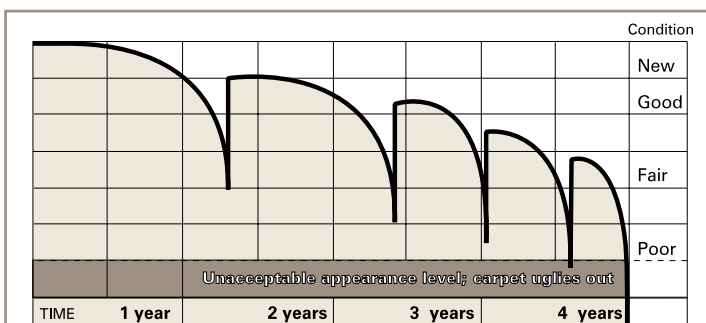


DIAGRAM 3: CARPET APPEARANCE LEVEL UTILISING AN UNPLANNED MAINTENANCE PROGRAM.

Carpet appearance level: Unplanned

Unplanned – crisis cleaning:

- Carpet is allowed to soil excessively before cleaning.
- Appearance is often dingy. It begins to “ugly out” before it wears out.

03 MAINTENANCE METHOD

To be able to implement the maintenance program access to the correct equipment is essential. Cleaning InterfaceFLOR products with incorrect, non-approved methods, equipment and chemicals may result in damage to the product and invalidation of the warranties.



TO BE ABLE TO IMPLEMENT THE MAINTENANCE PROGRAM, ACCESS TO THE CORRECT EQUIPMENT IS ESSENTIAL.

Vacuum equipment

It is recommended that the following equipment be utilised when vacuuming InterfaceFLOR product:

- Commercial canister-type vacuum with power head containing a rotating cylindrical brush powered by an electric motor.
- Commercial top loading upright vacuum with twin motor and rotating cylindrical brush.

Both vacuums must have tools that can access edges and hidden areas. A requirement for vacuum filtration systems according to Australian Standard AS/NZS 3733-1995 is that vacuums must be capable of filtering 97.5% of dust to 0.5 microns. Vacuum bags should be disposable. (See page 16 for more information on maintenance equipment recommendations.)

Note: SuperFlor S should be vacuumed with a suction only vacuum.

Interim and periodic maintenance method

The following cleaning procedures recommended for use on InterfaceFLOR products should be carried out by trained accredited operators.

a) Dry extraction (Low Moisture Absorbent Compound) (Interim)

Dry extraction involves massaging a low moisture absorbent compound into the carpet surface to remove soil and stains. Residual compound is then vacuumed from the carpet pile.

Method:

1. Thoroughly pile lift and vacuum carpet.
2. Spread the Dry Absorbent Compound as per manufacturer's instructions.
3. Brush in the Compound as per manufacturer's instructions.
4. Vacuum the Compound residue from the carpet.
5. Hot water extraction is recommended approximately once a year in conjunction with this system or as specified by your carpet maintenance plan.



b) Encapsulation / Crystalline Shampoo Application (Interim)

The encapsulation/crystalline shampoo method of maintenance is a low-moisture procedure similar in some respects to the dry extraction method. Benefits include faster access to the area than with hot water extraction and reduced drying times.

Preparation should always include vacuuming and pile lifting before applying the Encapsulation/Crystalline Shampoo using an electric sprayer, a simple pump-up garden type sprayer, or 3-head rotary machine. The carpet pile is then gently brushed so the solution is applied to all the fibres whilst dislodging and dispersing any accumulated soil.

Time should be allowed for the solution to dry and form the encapsulating crystalline formations around the fibre which effectively trap any soils and other contaminants. Drying time will vary according to several factors including humidity, air flow and ambient temperature, but it can be expected to be anything from 60 minutes. Once it is dry the area can be vacuum cleaned and pile lifted.

c) Bonnet Cleaning (Not Recommended)

The bonnet cleaning method described herein is a modified system adopted specifically for situations that involve heavy or unusual soiling.

The hot water extraction method is generally most desirable for these situations. However, the bonnet cleaning method may sometimes be needed as a supplement to allow earlier introduction of traffic. The methodology specified here is also effective in some cases that require restorative cleaning. **Care should be used in deploying this method as improper treatment can damage yarn and fibre.**

As with other maintenance methods, always prepare the carpet by vacuuming and pile lifting.

Apply approved pre spray using an electronic or pump-up type sprayer. Before drying begins, agitate the area utilizing a low speed (175rpm maximum) rotary floor machine to which has been attached a relatively soft and flexible vegetable or union fibre brush. Be extremely careful to cover the area thoroughly so that the carpet pile has the opportunity to be agitated in several directions, which will loosen attached soil and other contaminants.

Before the agitated area begins to dry, cover the area a second time using a 100% cotton bonnet, lightly moistened with clean water. As the area is covered, soil and contaminants will accumulate in the bonnet, requiring that the bonnet be rinsed in clean water before proceeding. After the area has dried completely, the carpet should be pile lifted.

NOTE: The bonnet should be frequently checked for cleanliness as, once soiled, it will need to be replaced before proceeding. Care should be taken when using this method as improper treatment can damage the yarn and fibre.



NOTE: BONNET CLEANING IS NOT RECOMMENDED FOR EITHER INTERIM OR PERIODIC MAINTENANCE



NOTE: THE RECOMMENDED EQUIPMENT AND METHODS USED MUST NOT LEAVE MORE THAN 30 GRAMS OF RESIDUAL MOISTURE PER TILE IMMEDIATELY AFTER CLEANING.



NOTE: ROTARY BONNET METHODS ARE NOT RECOMMENDED FOR USE ON INTERFACEFLOR PRODUCTS.



TECHNICAL SPECIFICATIONS ON EQUIPMENT AND CHEMICALS ARE AVAILABLE FROM AN INTERFACEFLOR ACCOUNT MANAGER OR THE 24/7 EMERGENCY CLEANING & MAINTENANCE HELPLINE: 1800 785 277.

d) Hot water injection and extraction (Interim/Periodic)

Hot Water Injection and Extraction involves a pre-spraying of an approved chemical (such as, Fabripower Plus) into the carpet and then extracting it with clean hot water utilising approved equipment and methods. For corrective or restorative cleaning, it is recommended that a trained and accredited Carpet Maintenance Technician perform this task. To reduce interior noise levels during cleaning it is recommended that a truck mounted extraction unit be utilised. Mechanical air movers should be used to aid the drying process.

Method:

Pre-spray carpet with an approved Extraction Pre-Spray. Operate the floor wand or self contained extractor by engaging the solution valve, applying clean hot water only. Pull equipment towards the operator for 1 m–1.5 m before releasing the solution valve.

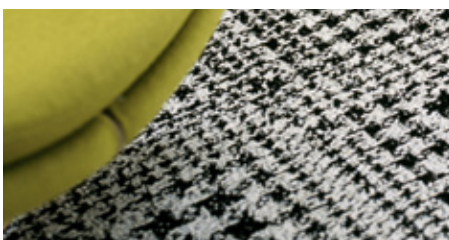
Cover the same area 2–3 times with the solution valve off to ensure as much moisture as possible is removed from the carpet. Overlap approximately 50 mm and proceed on next section of untreated carpet. Place drying fans on wet areas during cleaning and allow the carpet to completely dry before reintroducing foot traffic. Failure to do so will result in rapid resoiling and damage to the carpet fibre.

e) Chemicals

It is essential to realise that carpets are chemically sensitive fabrics which could be damaged by non-recommended chemicals. Use only approved chemicals for pre-spray or spotting on an “as required” basis. The InterfaceFLOR Carpet Spot Cleaning Kit is recommended for day to day spot cleaning. For spotting and pre-spray the pH should be between 4.5 and 8.5.

Anti-static treatments, optical brighteners, carpet protection chemicals and overly aggressive solvent based cleaners are not recommended for InterfaceFLOR products. Refer to AS/NZS 3733:1995 section 3. If in doubt, please call InterfaceFLOR Customer Support on 1800 008 101.

Technical specifications on equipment and chemicals are available from an InterfaceFLOR Account Manager, or the 24/7 Emergency Cleaning & Maintenance helpline: 1800 785 277.



04 KEY POINTS TO REMEMBER

Walk-Off Areas

One of the most effective preventative maintenance steps is a dirt barrier matting area at entryways, exits and any areas adjacent to hard surfaces. Dirt barrier matting areas should be vacuumed daily or as needed.

Vacuuming

Must be done slowly and methodically with a commercial upright, dual motor vacuum with a cylindrical brush or as outlined in section 3.

Pile lifting

Regular pile lifting with a motorised commercial pile lifter keeps the fibre standing upright and separated. In addition to alleviating matting, this procedure will make the vacuuming more effective. Soil is always easier to remove “dry” than wet.

Spotting

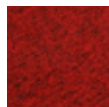
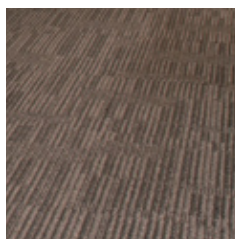
Addressing spots immediately can lower the frequency at which overall cleaning is needed.

Low moisture

When general cleaning becomes necessary, use as little water as possible.

Traffic

Carpet should be completely dry before reintroducing traffic. Failure to do so will result in rapid re-soiling and damage to the carpet fibre.



APPENDICES

01 SPOT CLEANING AND SOLUTION GUIDE

For the following Spot Problems, please try solution 1 first, before trying solution 2. If some staining remains, please try solution 3.

* Dry Powder may be used as a quick, dry, low odour alternative.

** For these spot problems, vacuum first and then follow the solutions suggested.

Spot Problem	Mr No Marks Carpet Master	Fabrisolve	Fabrisan	Dry Powder
Adhesives		1		
Animal Stains			1	*
Asphalt		1		
Berries	1			*
Blood	Use Medizyme 1st		2	
Butter	1	2		*
Candle Wax		1		
Carbon Black **		1		*
Cement **	1			*
Charcoal	1	2		*
Chewing Gum		1		
Coffee	1			*
Cola	1			*
Copier Toner **	1	2		*
Cordial	1			
Correction Fluid		1		
Crayon		1		*
Cream	1			*
Detergent	1			*
Dirt	1		2	*
Dishwashing Liquid	1			*
Dye		1		
Egg	1			*
Fat	1			*
Faeces			1	
Food Stains - Greasy	1	2		*
Fruit & Fruit juice	1			
Furniture Polish	1	2		
Glue - Water Base	1			
Glue - Solvent Base		1		
Grape Juice	1			
Grass Stain	1			*
Gravy	1			*
Ice Cream	1			*
Ink		1		
Iodine	Use Beta-Off			

CONTINUED...

Spot Problem	Mr No Marks Carpet Master	Fabrisolve	Fabrisan	Dry Powder
Jelly	1			*
Latex Adhesive		1		
Lipstick		1		*
Lollies	1			*
Lotion	1			*
Make Up		1		
Marker - Permanent		1		
Mascara		1		
Milk	1		2	*
Mud	1			*
Mustard	1			*
Nail Polish	1	1		*
Oil - Cooking	1	2		*
Oil - Motor	1	2		*
Paint - Latex	1			
Paint - Oil		1		
Peanut Butter	1			*
Perfume	1			*
Play-Doh		1		*
Potting Soil	1		2	*
Pudding	1			*
Rust	1			
Salad Dressing	1			*
Sauces	1			*
Shampoo	1			*
Shoe Polish		1		*
Shortening	1			*
Soap	1			*
Soft Drinks	1			
Soya Sauce	1			*
Spaghetti Sauce	1			*
Tar		1		
Tea	1			
Tobacco Juice	1			*
Tomato Juice	1			*
Tomato Sauce	1			*
Tooth Paste	1			*
Urine			1	*
Vaseline	1	2		*
Vomit	1		2	*
Water Stains	1			*
Wine	1			*
Yellowing	1			

STEP 1: USE FIRST
STEP 2: USE SECOND



Instructions for Whiteley spot cleaners:

- Clean up all spills promptly before a spill becomes a permanent stain.
- Remove excess soil or liquid from the carpet. For soil, gently scrape away surface spill with a spatula or knife, and for liquid spills dab area with an absorbent colourfast cloth.
- Where possible try to identify the type of stain; look, feel and smell.
- Always pre-test the spotter in a small inconspicuous area before using. This is to determine if the product is going to have any adverse effects on the surface.
- Apply spotter with a clean white cloth and gently dab the stain working from the outside towards the centre.
- For deep stains apply spotter directly to the carpet. DO NOT over-wet the carpet.
- Rinse the area with water after the stain has been removed.
- Repeat steps for stubborn stains.
- Restore the carpet pile to its original shape by combing the carpet.

Mr No Marks Carpet Master

1. Remove loose dirt or lift off as much of the spilt material as possible. If a wet spill, blot the affected area with a clean colourfast cloth or absorbent towel. Blot from the outer edge of the stain towards the centre. Do not scrub.
2. Spray affected area with a light foam. Wait a few moments and then gently rub with a clean, colourfast damp cloth. Rinse cloth and repeat until mark is removed from the carpet. (Do not overwet the carpet).
3. Rinse well with clean water to remove detergent residue and allow to dry.

Fabrisolv

1. Apply undiluted directly to the stain (use sparingly and avoid product penetrating to carpet tile backing).
2. Using a small soft brush or cloth lightly scrub the spot starting from the outside and working towards the centre.
3. Absorb as much Fabrisolv as possible from the surface using an absorbent cloth.
4. Rinse well with clean water to remove detergent residue and allow to dry.

Fabrisan

1. Remove as much excess soil as possible.
2. Apply undiluted FABRISAN directly to the soiled area using a trigger spray.
3. Gently work FABRISAN into the carpet pile.
4. Remove excess with blotting cloth.
5. Rinse well with clean water to remove detergent residue and allow to dry.

Note:

For hot water extraction prespray use FABRIPOWER PLUS. This should be applied to the carpet with a pressure spray unit then rinsed from the carpet with a hot water extraction machine.

The hot water extraction machine should use clean hot water of room temperature or no more than 45°C and the tiles should be left with no more than 30 grams of residual moisture after cleaning.

For best results, use promptly after spot occurs. If unsuccessful, refer to relevant carpet care and cleaning guide or call Whiteley free call number 1800 833 566.

Stubborn stains may require the services of a professional carpet cleaner. Please make sure to use protective gear when encountering excess biological contamination and/or accumulation.

* avoid overuse or careless excess spray as irritation may occur.

Refer to Technical Bulletin/Material Safety Data Sheet at www.whiteley.com.au

InterfaceFLOR recommend utilising cleaning technicians accredited with the National Upholstery and Carpet Cleaners Association. For your nearest technician call the InterfaceFLOR 24/7 Hot Line 1800 785 277





02 HEALTHCARE AND AGED CARE SPOT CLEANING

Health and Aged Care Facilities can impose additional demands upon cleaning and maintenance of carpets. However high performance InterfaceFLOR carpets combined with an appropriate spot cleaning response can ensure carpet remains attractive and functional.

Urine

For successful cleaning, urine needs to be cleaned up at the first possible moment and not allowed to dry onto the carpet.

New Urine Spill

1. With a clean white towel mop up as much of the spill as possible.
2. Utilise a hot water extraction unit using clean warm water only.
3. Go over the spill by applying water on the backstroke of the wand and vacuum only on the forward stroke.
4. Apply Fabrisan® Carpet Deodorant & Sanitiser to the effected area.
5. When dry thoroughly vacuum the area with a twin motor upright vacuum.

Old Urine Spill

1. Pre vacuum the area.
2. Tend to heavy spots with appropriate spot cleaner. (refer to Spot Cleaning & Solution guide on page 11)
3. Apply pre-spray of Fabripower Plus and agitate into the carpet surface.
4. Utilise a hot water extraction unit using clean warm water only.
5. Go over the spill by applying water on the backstroke of the wand and vacuum only on the forward stroke. (For heavy urine staining a truck mounted unit or portable with 100psi pump is recommended)
6. Apply Fabrisan® Carpet Deodorant & Sanitiser to the effected area.
7. When dry thoroughly vacuum with a twin motor upright vacuum.
8. Heavily soiled areas may require repeat applications.



NOTE: IF THE SPILL PROVES DIFFICULT TO REMOVE REMEMBER THAT THE ADVANTAGE OF USING INTERFACEFLOR MODULAR CARPET TILE IS THAT THE OFFENDING TILE CAN BE REPLACED WITH A TILE FROM YOUR SHELF STOCK.



NOTE: IN SOME PRODUCTS/COLOURS. IF A REPLACEMENT TILE FROM STOCK IS USED THEN EXPECT TO SEE A DIFFERENCE IN COLOUR FROM OLD TO NEW UNTIL THE CARPET IS WALKED IN.



Yellowing

If the area is not rinsed clean while the spill is new there may be some penetration of urine into the yarn. Once this has occurred, and the spill dries, there may be some residue yellowing of the fibre that cannot be successfully removed.

Odour

Once urine has dried it forms Uric Acid Crystals and other salts which become the major source of urine odour. Moisture is attracted to the crystals and salts which then gives support to bacterial activity. It is the off gassing of bacteria and enzymes that create the odours that are associated with urine spills.

Uric Acid Crystals and Enzymes should be cleaned from the carpet using Fabrisan®.

Blood

1. With a clean white towel mop up as much of the spill as possible.
2. Apply Whiteley Medizyme enzyme spotter to the spill using a clean white cloth.
3. Dab the stain working from the outside to the centre.
4. Rinse the area thoroughly with clean water and a small amount of Mr No Marks.
5. Repeat the procedure if necessary.
6. When complete, rinse the area with clean water.

Vomit and Faeces

1. Using a spatula or flat knife scrape up as much of the spill as possible.
2. Apply Whiteley Medizyme enzyme spotter to the spill using a clean white cloth.
3. Dab the stain working from the outside to the centre.
4. Then apply Mr No Marks with a clean white cloth.
5. Dab the stain working from the outside to the centre.
6. Rinse the area thoroughly with clean water.

Mercurochrome - Iodine

1. With a clean white cloth mop up as much of the spill as possible.
2. Apply Whiteley Beta-Off.
3. Dab the stain with a clean white cloth from the outside to the centre.
4. Rinse the area thoroughly with clean water and a small amount of Mr No Marks.
5. Repeat the procedure if necessary.

Medications

1. Use spotters in the following order until stain is removed –
 - A Mr No Marks
 - B Medizyme
2. When stain is removed rinse the area thoroughly with clean water.

03 MAINTENANCE EQUIPMENT RECOMMENDATIONS

Using the right equipment is as important as using the right cleaning solutions and the best techniques. The following guidelines provide the technical specifications for essential carpet maintenance equipment.

Vacuum (for twin motor uprights)

Power	8 amp
Filtration	Down to 0.3 microns or lower
Vacuum	60" water or better @ 90+ cfm
Brush	Toothed belt drive preferred Brush speed 2,500 – 3,500 rpm Brush diameter 2H" x 3H" Brush height adjustment essential; self-adjusting design preferred
Working Width	14" – 18"
Dust Bag Capacity	300 – 400 cubic inches



NOTE: TOP-LOADING DUST BAG MACHINES ARE STRONGLY RECOMMENDED

NOTE: BATTERY POWERED VACUUM CLEANERS ARE NOT RECOMMENDED

NOTE: FOR HEALTHCARE SITUATIONS, USE MACHINES WITH A 65 OR LOWER DBA RATING

NOTE: BACK PACK STYLE VACUUMS ARE NOT RECOMMENDED



NOTE: BATTERY OPERATED EQUIPMENT IS NOT RECOMMENDED.

Pile Lifting Machines

Power Requirements

Drive Motor	1/2 Horsepower
Vacuum Motor	1 1/2 – 1 3/4 Horsepower
Brush Width	Approximately 100 mm; Spirals, total width 400 mm – Vegetable Fill or Nylon
Brush Adjustment	Self Levelling

Hot Water Extraction Machines

Power Requirements

Vacuum Motor	1500 Watt
Vacuum Type	3 Stage by-pass
Vacuum Shoe	300 mm – 500 mm
Water Lift	2.5m – 3.5m At 100 CFM
Fluid Delivery	2 Litres/Minute at 50 – 100 PSI
Solution Tanks	15 Litres Upwards for both solution & Recovery
Brush Motor	90 Watt 1/8 Horse Power
Brush Width	250 mm – 450 mm with 4v-Shaped rows of Nylon Bristles

Extraction Compound Application Machines

Power Requirements

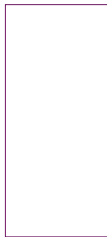
Motor	200 Watt
2 Brush System	Contra Rotating
Brush Width	250 mm – 500 mm
Brush Speed	400 Rpm

Crystalline Shampoo Systems Dry Extractor and Crystalline Applicator

Power	2 – 8 Amps
Width	12” – 22”
Brushes	(2)10” – 20”
Brush Speed	400 Rpm

Bonnet / Rotary Floor Machines

Drive Motor	3/4 Horsepower minimum
Size	17” x 20”
RPM	175 rpm maximum
Brush type	Pad driver
Notes	Do not exceed 175 Rpm Pads Absorba 100% cotton





CONTACTS



Australia

InterfaceFLOR Australia

Phone: 02 8332 2400

Fax: 02 9318 1996

Email: enquiries.ap@interfaceflor.com

Web: www.interfaceflor.com.au

InterfaceFLOR 24/7 National Hotline

For urgent installation, cleaning or maintenance enquiries:

Phone: 1800 785 277

New Zealand

InterfaceNZ Ltd

Phone: 0800 800 656

Email: enquiries@interfacenz.com

Web: www.interfacenz.com

Singapore

Phone: +65 6478 1510

Web: www.interfaceflor.sg

Hong Kong

Phone: +85 2 2802 0838

Email: hkgweb@interfaceflor.com

Web: www.interfaceflor.hk

China

Phone: Beijing: +86 10 6590 7810

Phone: Shanghai: (021) 634 03868

Email: hkgweb@interfaceflor.com

Web: www.interfaceflor.cn

Japan

Phone: +81 3 5421 1560

Email: jpnweb@ap.interfaceinc.com

Web: www.interfaceflor.jp

Thailand

Phone: +66 2459 1052

Web: www.interfaceflor.in.th

Indonesia

Phone: +62 21 582 3119

Web: www.interfaceglobal.com

Korea

Phone: +822 2058 0355

Web: www.interfaceglobal.com

Malaysia

Phone: +60 12 431 1226

Web: www.interfaceflor.sg

Vietnam and Indochina

Phone: +668 182 29340

Web: www.interfaceflor.in.th